

Area Lighting Poles - Round Non-Tapered

Catalog Number	Pole Height (ft)	Weight (lbs)	Gauge	Shaft Size (in)	Base Plate Diameter (in)	Bolt Circle Dia. (in)	Anchor Bolts (in)		Max Loading Capacities					
									80 (mph)		90 (mph)		100 (mph)	
							Dia x Len x Hook	Projection min / max	EPA (ft ²)	Wt. (lbs)	EPA (ft ²)	Wt. (lbs)	EPA (ft ²)	Wt. (lbs)
RNS-10-40-11-AB	10	70	11	4.0	10.5	7.0 - 9.0	0.75 x 17 x 3	4.00 / 5.00	19.1	480	15.0	375	12.2	305
RNS-15-40-11-AB	15	100	11	4.0	10.5	7.0 - 9.0	0.75 x 17 x 3	4.00 / 5.00	9.6	250	7.4	185	5.9	150
RNS-20-40-11-AB	20	120	11	4.0	10.5	7.0 - 9.0	0.75 x 17 x 3	4.00 / 5.00	6.0	150	4.5	150	3.5	125
RNS-25-40-11-AB	25	145	11	4.0	10.5	7.0 - 9.0	0.75 x 17 x 3	4.00 / 5.00	2.9	100	2.0	75	1.4	75
RNS-25-50-11-AB	25	180	11	5.0	10.5	7.0 - 9.0	0.75 x 17 x 3	4.00 / 5.00	7.3	180	5.5	150	4.3	150
RNS-25-50-7-AB	25	260	7	5.0	10.5	7.0 - 9.0	0.75 x 17 x 3	4.00 / 5.00	12.1	300	9.4	250	7.5	200
RNS-30-50-11-AB	30	210	11	5.0	10.5	7.0 - 9.0	0.75 x 17 x 3	4.00 / 5.00	4.2	150	3.0	125	2.3	100
RNS-30-50-7-AB	30	305	7	5.0	10.5	7.0 - 9.0	0.75 x 17 x 3	4.00 / 5.00	8.0	200	6.5	160	4.8	125

Pole Shaft

The pole shall be a one section design fabricated from standard 11 gauge (0.1196") or 7 gauge (0.1793") steel. Each section shall be fabricated from high strength low alloy steel conforming to ASTM A-500 grade B, with minimum yield strength of 42,000 psi. Each pole will have a full-length longitudinal weld and will be cylindrical in cross-section.

Base Plate

The base plate is fabricated from a structural quality hot rolled carbon steel plate that meets or exceeds ASTM A-36 with a minimum yield of strength of 36,000 psi. The base plate telescopes the pole shaft and is circumferential welded top and bottom. The base plate has slotted bolt holes.

Hand Hole

A reinforced hand hole, having a nominal 2.5" x 5" opening, will be installed 18" above the base plate on all poles. A hand hole cover and attaching hardware is included with each hand hole assembly. A ground lug will be welded either on the hand hole frame or on the inside of the pole opposite the hand hole depending on the design.

Anchor Bolts

Anchor bolts are fabricated from a commercial quality hot rolled carbon steel bar that meets or exceeds minimum yield strength of 55,000 psi. Anchor bolts are sized according to each pole design and are furnished with 2 galvanized heavy hex nuts and 2 galvanized flat washers. Anchor bolts shall be galvanized a minimum of 4" on the threaded end in accordance with ASTM A-153. Anchor bolts will ship with the poles unless otherwise specified.

Pole Top

Each pole will be provided with either a removable pole cap or 2-3/8" O.D. x 4" tenon top (other sizes available).

Welding

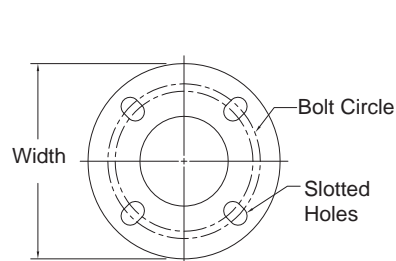
All welds shall be of the highest quality and performed by American Welding Society certified welders conforming to the latest version of the American Welding Society specification AWS D1.1.

Finish

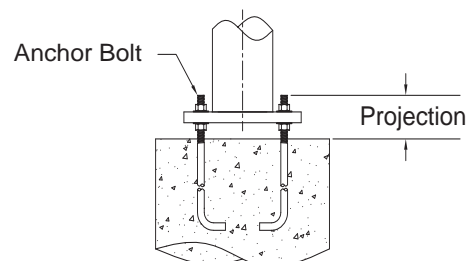
All poles, mounting brackets and platforms are furnished with a coating of either red oxide/zinc primer, factory painted, powder coated or hot-dip galvanized to ASTM A-123. Miscellaneous hardware will be galvanized to ASTM A-153. Exterior finish coatings are available by request.

Note

Anchor bolt patterns are subject to change. Please consult factory prior to construction.



Base Plate



Base Detail